

STLTONES

STL Tonality - Howard Benson Trilogy Plugin Suite User's Guide

Version 1.3.0 For Mac & Windows

Introduction.....	3+4
System Requirements & Supported Host Softwares	5+6
Recommendations.....	7
iLok User ID & iLok License Manager.....	8+9
Installation & License Activation.....	10+11+12+13
Main Interface.....	14
Stomp Section.....	15
Amp Modules.....	16+17
Amp Controls.....	18
Cabinet Section.....	19
Preset Manager.....	20+21+22
Support.....	23
Troubleshooting.....	24+25+26+27+28+29
Credits.....	30

INTRODUCTION

STL Tonicity - Howard Benson Plugin



INTRODUCTION

STL Tonality - Howard Benson Plugin

Designed by **STL Tones**, **Benson** and **Plotnikoff**, the **Howard Benson Plugin Suite** has been developed to capture every song aspect of what makes the duo's guitar tones so distinctive. The plugin suite takes your direct input guitar signal all the way to a fully mixed guitar tone with its unique all-in-one design.

Experience an all-access pass to **Benson** and **Plotnikoff's** mix-ready guitar tones from some of their biggest-selling records.

For over 20 years, **Howard Benson** and **Mike Plotnikoff** have been the vanguard instrumentalists for some of rock n' rolls biggest names, including **Bon Jovi**, **My Chemical Romance**, **The All-American Rejects**, **Hoobastank**, **Three Days Grace**, **P.O.D**, **Daughtry** and **Papa Roach**.

Version 1.3.0 Updates -

STL Tones brings 5-time GRAMMY®-award winning mix engineer Chris Lord-Alge's guitar tones to life with a one of a kind Preset Pack to use with the Tonality Howard Benson Guitar Plug-In Suite. Chris Lord-Alge is known for collaborating with Howard Benson, who has produced the plurality of the albums Lord-Alge has mixed. The 'Trilogy' team award-winning engineer/mixer Mike Plotnikoff, GRAMMY®-nominated producer/engineer/mixer and multi-instrumentalist Howard Benson and Chris Lord-Alge have been working on records together since 1998, before they were even doing digital records. These artists include **Santana**, **Less Than Jake**, **Zebrahead**, **P.O.D.**, **Crazytown**, **Breaking Benjamin**, **Bon Jovi**, **Papa Roach**, **Hoobastank**, **Theory of A Deadman**, **Daughtry**, **The All American Rejects**, **Three Days Grace**, **Saosin**, **Seether**, **My Chemical Romance**, **Halestorm**, **Skillet** and many more.

SYSTEM REQUIREMENTS

STL Tonality - Howard Benson Plugin

- Low Latency Audio Interface (ASIO / Core Audio compatible).
- High-Z (high impedance) instrument input.
- Digital Audio Workstation (**DAW**) or a standalone plugin host.

Windows requirements:

- Windows 7 - 64 bit.
- Intel Core 2 Processor Family or better.

Mac requirements: • OS X 10.9.0 +

- Intel Core 2 Processor Family or better.

We recommend an Intel Core i5 processor or better for the best user experience.

During recording or monitoring we recommend a buffer size of 128 samples or lower, this is to minimize latency and improve the play through experience. This can be set in your audio interface setup utility or in your current DAW audio settings.

SUPPORTED HOST SOFTWARE

STL Tonality - Howard Benson Plugin

To use STL Tones software you need an audio software which can load “plugins”. This plugin is not designed to work as standalone software. This plugin officially supports the following software host:

Pro Tools 11 - 2018: Mac & PC: AAX Native

Logic Pro 9 and 10 (X): Mac: Audio Units

Cubase 9: Mac & PC: VST

Ableton Live 9.X or later: Mac: Audio Units & VST; Windows: VST
Reaper 5.x: Mac: AU & VST; Windows: VST.

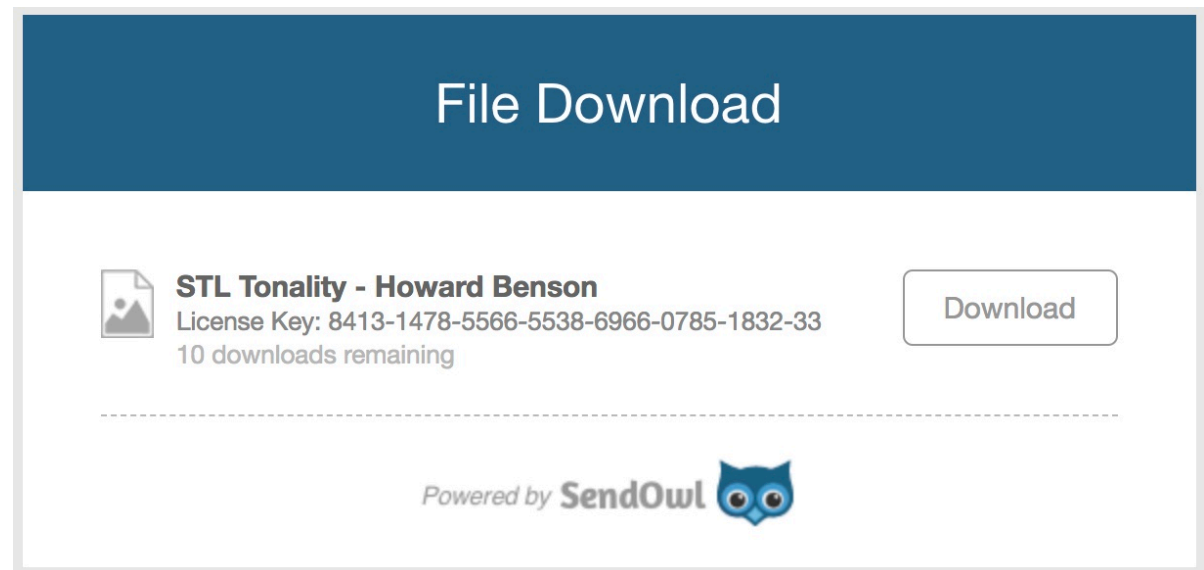
- Always use the high impedance (Hi-Z) input of your sound-card. This will ensure less noise and signal loss. Most real (pre)amplifiers and stomp boxes, have an input impedance of 1MegaOhm, so it would be a good idea to get a sound-card with 1MegaOhm input impedance to use this plugin.
- Always make sure to have the highest input signal before the AD conversion, avoiding clipping.
- Amp sims and stomp box simulators are not noisy, they do not add noise. In fact, they're a lot less noisy than real hardwares. If you have noise issues, check your guitar electronic circuit, cables and sound-card settings.
- In almost all cases, amp sims and stomp box simulators don't introduce noticeable latency. STL Tonality doesn't introduce any noticeable latency. If you're experiencing latency issues, check your sound- card settings (specifically reduce the “Input Buffer Size to 128 samples”).

STL Tones User Account -

In your STL Tones User Account, you will have access to your product installers, and latest software updates. To login to your user account, go to <http://www.stltones.com> and click the 'Login' button in the upper right-hand corner of the website. If you don't have a user account, please create one by clicking 'Create Account' inside the same login window.

License Location -

- In your STL Tones account you will have access to your product installers and latest updates. By clicking your product download link, a new window will open that will show your Activation License
- To login into your user account, go to <http://www.stltones.com> and click on the "Login" button in the upper right- hand corner. If you don't have a user account, create one by clicking "Create Account" inside the same login window.



iLok User ID & License Manager

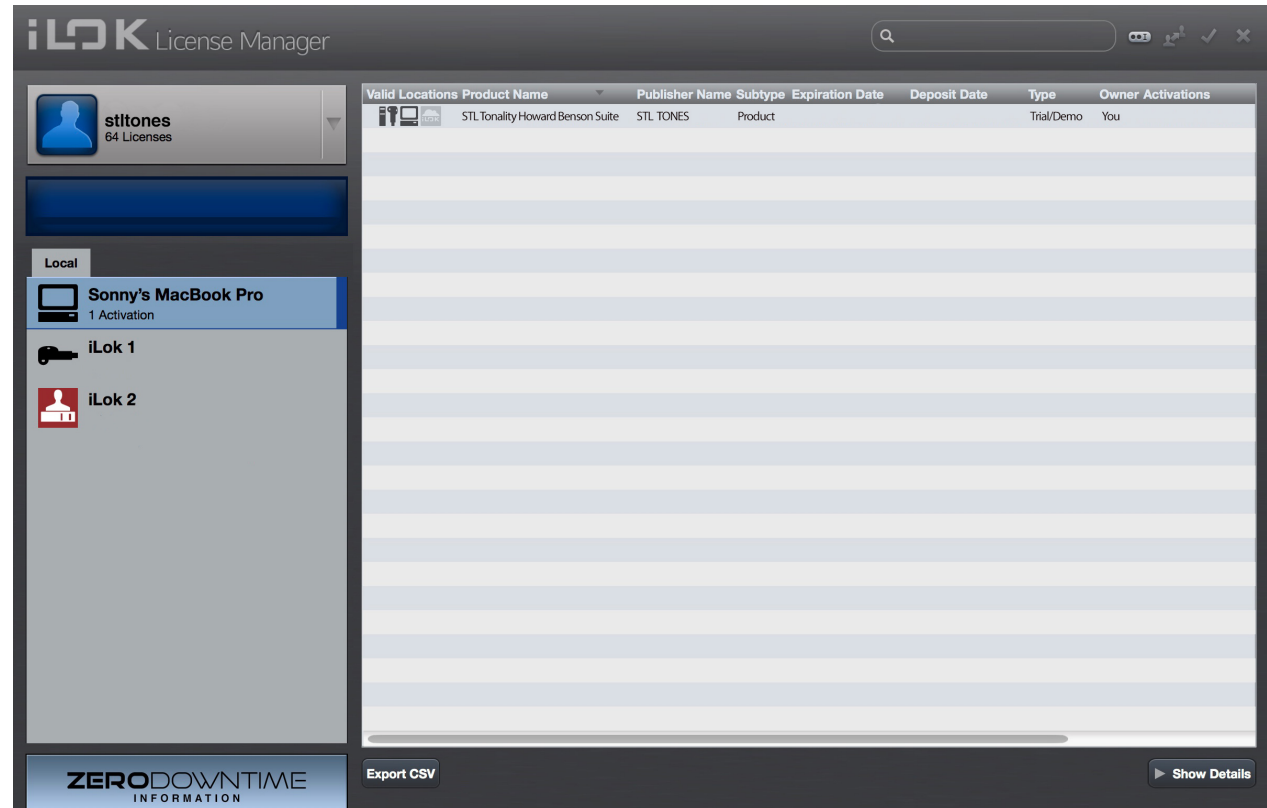
STL Tonality - Howard Benson Plugin

Please create an iLok account by visiting <http://www.ilok.com> and download the latest version of the iLok license manager application. This will allow you to register your serial number and deposit your license to your computer or an iLok USB key. NOTE:- **You DO NOT need an iLok USB Dongle in order to use this plugin. You can simply register your iLok license code to your computer that you intend to use the plugin.**

Install the **iLok License Manager**, open the program on your computer, and log in with the iLok User ID information that you created at <http://www.ilok.com>. When logged in, a list of available destinations for license placement will be displayed under your

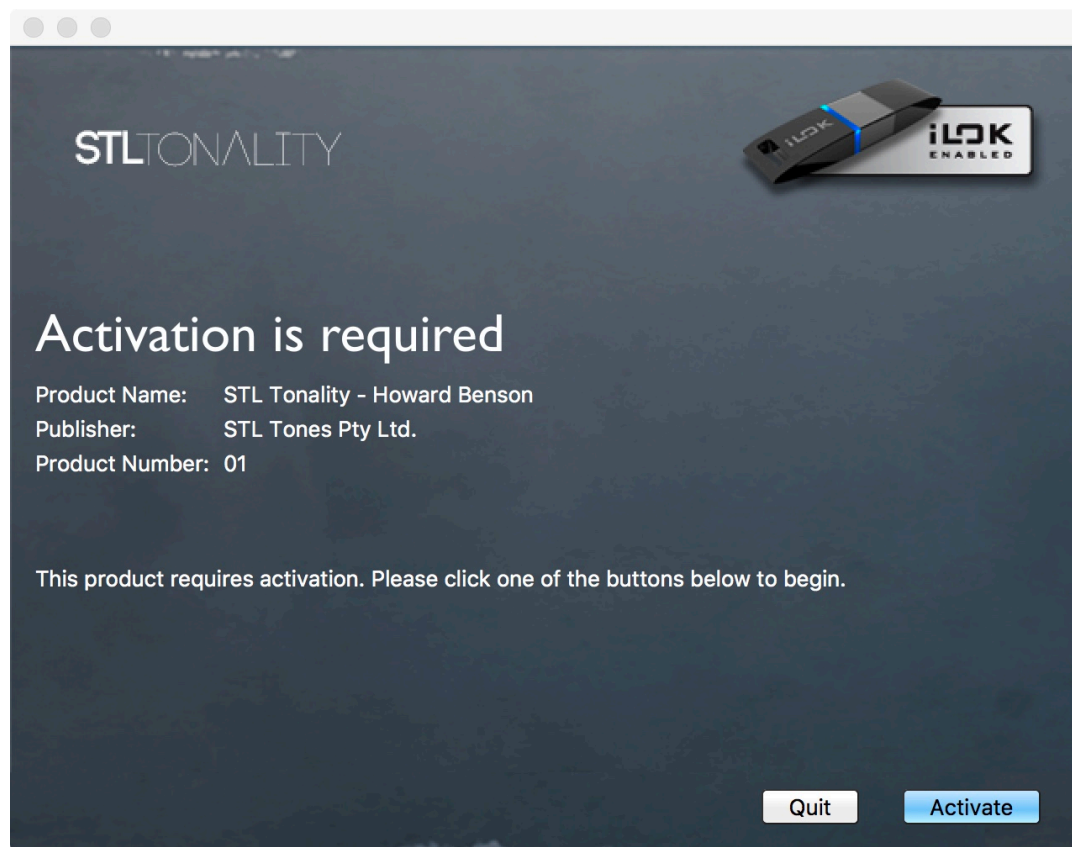
User ID, such as your computer, or your iLok USB Keys. A list of all currently activated products will be shown in the main right list window. Inactive licenses will be shown in the “available” tab on the top.

You can drag and drop licenses to deposit them in your computer or iLok USB Keys.



- Run the provided installer which you will receive via email, follow the on-screen instructions given by the installation software.

License Activation -



The plugin won't be functional until you authenticate it with a valid iLok license.

Follow these steps to complete the software activation.

STEP 1 -

After logging in to your iLok Account, click on the “Activate” button and go through the process to authorise your software.

STLTONALITY

Activation Code Entry

Do you have an activation code available? If yes, please enter it below.

- - - - - - -

[Click here if you need to purchase a license for STL Tonality - Howard Benson .](#)

Back No Next

STEP 2 - Enter your serial number and if valid, green ticks will appear, as seen in the image below.

STLTONALITY

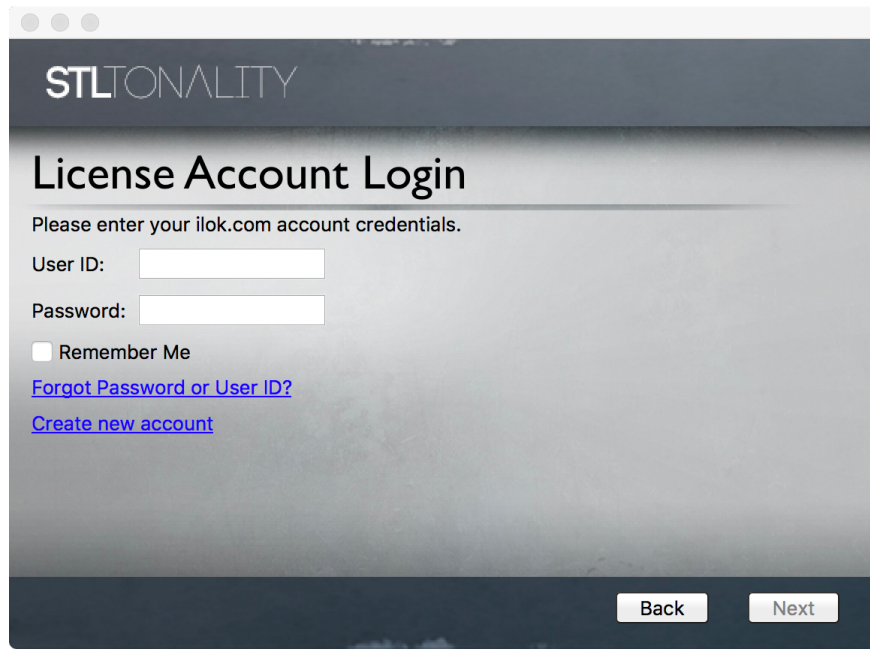
Activation Code Entry

Do you have an activation code available? If yes, please enter it below.

7221 - 5119 - 9732 - 5128 - 9322 - 9559 - 6802 - 62

[Click here if you need to purchase a license for STL Tonality - Howard Benson .](#)

Back No Next



STLTONALITY

License Account Login

Please enter your ilok.com account credentials.

User ID:

Password:

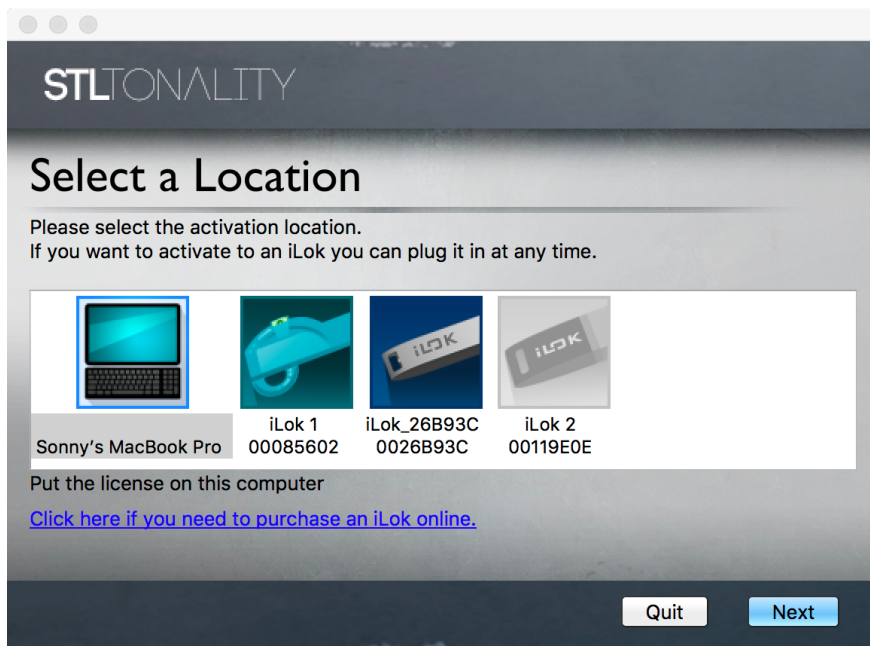
☐ Remember Me

[Forgot Password or User ID?](#)

[Create new account](#)

Back Next





STEP 3 - If you haven't yet created one, click on the 'Create new account' link, and you will be directed to ilok.com to create an account, which is free.



STLTONALITY

Select a Location

Please select the activation location.
If you want to activate to an iLok you can plug it in at any time.

			
Sonny's MacBook Pro	iLok 1 00085602	iLok_26B93C 0026B93C	iLok 2 00119E0E

Put the license on this computer

[Click here if you need to purchase an iLok online.](#)

Quit Next

STEP 4 - Here you will see all available locations to place your license. Select either your computer, iCloud, or iLok USB key.



STEP 5 - Successful Activation window will be next, confirming you have registered your product correctly.

MAIN INTERFACE

STL Tonicity - Howard Benson Plugin



Input and Output Controls:

Input will affect how much signal the plugin will feed receive. This will affect the amount of distortion range of the Gain pots in the Amplifier and Stomp Sections. Adjust according to your purposes and input signal levels. Output will affect on how much signal the plugin will feed out to your DAW channel. Meters will show if input or output signal are clipping by appearing red.

Gate: Cuts unwanted noise spill, hiss or hum by setting a threshold at which the input signal need to be above for processing.

Tuner: Click to enable the global tuner. The tuner is viewable from any 'window' within the plugin, so when enabled, you can continue to tune your guitar from wherever you may be within the plugin.

Amp Select: These buttons control which Amp module you are currently using.

Tone: Here you have the option to navigate to the Stomp Section, Amp Module Section and Cabinet Section. When a section is On, the 'On' light's will appear. NOTE, if you wish to use different Amp and Cab combinations, simply click the 'Lock' button, this will disengage the preset Cabinet's from loading when changing between different Amp modules.

STOMP SECTION

STL Tonicity - Howard Benson Plugin



Screamer: There are 3 controls for the Tube Screamer Pedal. 1) Drive, which controls the amount of Gain you are adding to the signal. 2) Gain, which is the amount of Volume you are adding to the signal. 3) Tone, this controls the amount of tonal frequencies you wish to add to the signal.

Delay: There are 6 controls for the Delay Pedal. 1) Delay Time, which sets the delay time note. This value can be synced to the Daw by clicking the [5] 'BPM Sync' button. You can also use the [6] 'Tap' button to Tap a specific delay time of your choice. 2) Level, which controls the mix of your signal, from 0-100%. 100% is for an equal mix. The dry signal always passes unprocessed,

when the mix is at 100%, the delayed signal has the same amplitude, therefore at 50%, the delayed signal is lower. 3) Feedback, controls the feedback and repeats of the Delay. 4) Pre/Post button, this switch allows you to choose the delay position in the chain. Use Pre if you want the delay in front of the amp, or Post if you want it in the loop of the Amp. *NOTE, you can only use the effect in Stereo mode when the switch is in Post Mode.*

Reverb: There are 4 controls for the Reverb Pedal. 1) Mix, which controls the balance of the dry and wet signal. 2) Decay, which sets the time of the Reverb, from 0-10seconds without temporal reference. 3) Pre Delay, controls the delay time before the reverberated signal appears. 4) Pre/Post button, this switch allows you to choose the reverb position in the chain. Use Pre if you want the reverb in front of the amp, or Post if you want it in the loop of the Amp. *NOTE, you can only use the effect in Stereo mode when the switch is in Post Mode.*

AMP MODULES

STL Tonicity - Howard Benson Plugin



AMP 1 - Modelled from a German voiced high gain amp with aggressive punch.



AMP 2 - Modelled from a vintage Canadian amp with blistering high gain functionality, paired with the clean channel for modern vintage crunch.



AMP 3 - Modelled from a 60's vintage British style amp, with speed and intensity for all styles of rock.

AMP MODULES

STL Tonicity - Howard Benson Plugin



AMP 4 - Modelled from the circuitry of the iconic 100W 2x12 American Clean amplifier.



AMP 5 - Modelled from the worlds most iconic Amplifier from the 50's.



AMP 6 - Modelled from a revered vintage American bass amp. This amp remains an unmistakable part of the bass tones for many generations of musicians. The module has 2 channels, 'Bright' & 'Normal'

Bass / Mid / Treble: the classic tonestack controls. Like in real amplifiers, every control influences the tonal response of the others involved in the circuit.

Presence: Adjusts the amount of high frequencies.

Contour(Amp1): controls the saturation behaviour. When turned up, the overall gain will increase in the high-frequencies, making the distortion more saturated.

Gain: controls the amount of gain and saturation of your sound. In Clean mode (if applicable to the module), it influences the overall perceived output volume more than in Lead mode, where it controls mostly the amount of distortion.

Volume: controls the overall volume of the amp. It also affects the frequency response. Higher master volume will react as the Master volume control on a real tube amp. This level will be the input level of the power amp.

Clean Bright(Amp's 3+4+5): controls the picking attack, making the sound brighter or darker / softer depending on your needs. The bright switch may help you to saturate the upper register of your tone.

CABINET SECTION

STL Tonality - Howard Benson Plugin



Cab Menu: Click to switch between 6 of Howard Benson's Cabinets, and also the IR Loader. Feel free to experiment with different Amp & Cab combinations, there are endless possibilities. Note, you can also change which cabinet you are using by simply clicking on the cabinet of your choice.

IR Loader: Click on the EXT Cab button, then click Load IR button to load an IR wav file.

PRESET MANAGER

STL Tonicity - Howard Benson Plugin



In the STL Tonicity header section, you will find controls for the STL Tonicity proprietary Preset Management System and other useful features:

- **Bank:** A bank is a group of presets which can be imported or exported to file, in order to save or recall settings, or to move them from one DAW to another.
- **Add Bank (+):** lets you add a new Preset Bank. You can change the Preset Bank name by clicking the EDIT button to the right of the Preset Bank.
- **Remove Bank (-):** lets you remove the selected Preset Bank.
- **Preset Bank Dropdown Menu:** This is where you can select which bank you are wanting to use. Click the dropdown menu to view more Preset Banks.
- **Edit:** by clicking this button you can edit the name of the current Preset Bank through a dialog box. You cannot Edit the two default Preset Banks titled 'Howard Benson', or 'STL Tones'. You need to create a new User Bank in order to edit or remove.
- **Add Preset (+):** lets you add a new preset to the current bank. Clicking on this button will create and load a new preset with a default name ("Preset"), using the current plug-in settings.

- **Remove Preset (-):** lets you remove a preset from the current bank. Clicking on this button will erase the current preset and load the settings of the previous one on the list (or the next one, in case the removed preset was the first of the bank).
There is no undo function, so use this control carefully.
- **Preset Selector:** lets you switch between presets contained in the current bank. Clicking on this control will open a drop down menu showing all the available presets. Selecting a preset will immediately update the plug-in settings to the ones stored into it. *PLEASE NOTE :- If you edit a preset, and click to another preset, the settings will not be saved automatically. You need to save the presets before proceeding to the next preset.*
- **Edit:** by clicking this button you can edit the name of the current preset through a dialog box. Once a preset is loaded, as soon as you edit one of the plug-ins settings, an **asterisk** (“*”) will appear next to the preset name, in order to remind you that the settings for that preset are changed. You can revert the settings back using the Revert function or permanently update them using the Store function. *PLEASE NOTE :- If you edit a preset, and click to another preset, the settings will not be saved automatically. You need to save the presets before proceeding to the next preset.*
- **Save:** lets you store the selected preset settings as its original state. Clicking on this button will save all the current plug-in settings and mark them as the last saved state, meaning that every successive use of the Revert function, will recall these settings. This control is enabled only when a preset has been changed from its original state and will be disabled as soon as you click it (you'll also notice the asterisk next to the preset name disappear).
- **Revert:** lets you revert the selected preset settings to the original state. Clicking on this button will discard all the current plug-in settings and reload the last saved ones. This control is enabled only when a preset has been changed from its saved state.

- **Copy:** lets you copy the current preset settings on the plug-in's clipboard. You can then use the Paste function to reload them. The great thing about this control, is that the plug-in's clipboard is shared among different STL Tonality instances, so you can conveniently copy and paste settings from one to another, without having to explicitly save and load the bank. *Please note that as soon as all the instances of STL Tonality are removed from the project, the clipboard data will be lost.*
- **Paste:** lets you load the preset settings available on the plug-in's clipboard. You can then use the Copy function to store them. The great thing about this control, is that the plug-in's clipboard is shared among different STL Tonality instances, so you can conveniently copy and paste settings from one to another, without having to explicitly save and load the bank.
- **Routing:** lets the user select the processing mode of the plug-in (Mono or Stereo). It is extremely important to note that a complete stereo separation, and thus a correct stereo image preservation, is only possible when STL Tonality is placed on a stereo bus and fed with a stereo signal with left and right components panned at 100%. Feeding STL Tonality with two tracks panned at less than 100% left and right, will not preserve the correct stereo separation of the tracks at the output. Stereo Mode will double the CPU load of the plug-in, as the two audio channels are being implicitly processed by two separated instances of the plugin.
- **Preset Bank and Cab IR Location:** Please note, Preset Bank, Presets, and Custom Cab IR files are located on your local drive. See below for locations.

Mac - Users/Documents/STL/Tonality/Howard Benson/Banks

PC - C:\Users\Documents\STL\Tonality\Howard Benson\Banks

For technical issues or any problems experienced with our software contact us directly via the website www.stltones.com. Before doing so, follow our Troubleshooting questions below to see if these fix your issue.

Support Information to be provided -

In order to help us assist you the best way possible, please attach the following information to our support team:
Product Version Number (e.g STL Tonality - Howard Benson, V1.3.0.)

Version number of your audio system (e.g ProTools 11.2.2, Logic 10.2.4)
Interface/hardware (e.g. Focusrite Scarlett 2i2, Apogee Duet 2, etc.) Computer and operating system info (e.g Macbook Pro OS X 10.9.6, Windows 10 ver 1709, etc.)

Please include a detailed description of the problem.

Troubleshooting -

Having issues with our software?

Uninstall / Reinstall

This will repair possible broken permissions, fix corrupted files, and remove old versions of our software

Steps:

- 1) Close out of all host software (Pro Tools, Logic, Cubase, etc.)
- 2) Uninstall your plug-in.
- 3) Open your host software and ensure that the plug-ins no longer showing up in the inserts list. If the plug-ins are still present, locate the files on your computer and remove them manually. Once they no longer show up in your DAW (after restarting it), move on to step 4.
- 4) Close out of all host software.
- 5) Download the latest iLok License Manager application from [iLok.com](https://www.ilok.com), install it, run the program and login with your iLok credentials.
- 6) Log into your STL Tones User Account and download the latest installers for the plug-in.
- 7) Run the latest installers and start your host program.
- 8) To confirm, ensure that your host program is reading the latest version of our software.

iLok synchronisation:

If you receive a message telling you to activate your licenses again, follow these steps.

Fix iLok connectivity:

If your iLok cannot connect to your computer, try plugging it in through a powered USB 2.0 hub – this will increase the likelihood that the iLok will connect to the computer. Once it is synched, it should be able to be plugged back into the computer's USB port for use.

Repair your computer's hard-drive:

Repair permissions on your computer.

Instructions: Mac & Windows

Run your host software as an administrator (Windows-only) :

This can fix a variety of issues that result in crashing or error messages on Windows DAWs that are loading our plugins for the first time.

Steps:

- 1) Exit your host program (Pro Tools, Cubase, etc.)
- 2) Right-click on the icon for that host program and select "Run as an Administrator." You will only have to do this once, meaning you can open up the host program normally the next time.

How do I find my plugin in Reaper?

If cannot find your STL Tonality plugin in Reaper, follow these steps in order to make the plugin available.

Step1:

Download and install the latest version of iLok License Manager from iLok.com. After you install, open it and login with your iLok credentials. If you don't have an iLok account, please create an account for free at iLok.com.

Step2:

Now check if the plugin is installed on your computer in the default folder.

File Locations: MAC

VST: Macintosh HD/Library/Audio/Plug-ins/VST/STL Tonality Howard Benson

Note: The plug-in files are "Universal Binaries, which means that 32-bit and 64-bit plug-ins are included in the same file / Location.

File Locations: Windows

32-bit VST: C:\Program Files (x86)\Steinberg\VSTPlugins\STL Tonality Howard Benson

64-bit VST: C:\Program Files\VSTPlugins\STL Tonality Howard Benson

If you don't find the respective files please reinstall your STL Tonality Product. If the relevant plugin files are in the above folder, perform a rescan:

In Reaper, press [Ctrl] + P (Windows) / [Cmd] + [,] (Mac) to access Preferences.

Go to Plug-ins > VST.

Under "VST Plugin Path," make sure that the following path is listed (if not, add it):

Windows:

32-bit VST: C:\ Program Files (x86) \ Steinberg \ VSTPlugins \ STL Tonality Howard Benson

64-bit VST: C:\ Program Files \ VSTPlugins \ STL Tonality Howard Benson

Mac:

System HD > Library > Audio > Plugins > VST

Click on Clear Cache/Re-Scan. Create a new session with a supported sample rate, add a track and load your STL Tonality plugin. If the pop-up window tells you to activate please press “activate” button and insert your Full license serial code.

How do I find my plugin in Pro Tools?

If you cannot find your STL Tonality plugin in Pro Tools, follow these steps in order to make the plugin available.

Step1: download and install the latest version of iLok License Manager from iLok.com. After install, open it and login with your iLok credentials. If you don't have an iLok account, please create an account for free at iLok.com.

Step2: check if the plugin is installed on your computer in the default folder.

VST: Macintosh HD / Library / Audio / Plug-ins / VST / STL Tonality Howard Benson

AAX: Macintosh HD / Library / Application Support / Avid / Audio / Plug-ins / STL Tonality

Note: The plug-in files are “Universal Binaries, which means that 32-bit and 64-bit plug-ins are included in the same file/ Location.

File Locations: Windows

32-bit VST: C:\Program Files (x86)\Steinberg\VSTPlugins\STL Tonality

64-bit VST: C:\Program Files\VSTPlugins\STL Tonality

32-bit AAX: C:\Program Files(x86)\Common Files\Avid\Audio\Plug-Ins\STL Tonality

64-bit AAX: C:\Program Files\Common Files\Avid\Audio\Plug-Ins\STL Tonality

If you don't find the respective files please reinstall your STL Tonality Product. If the relevant plugin files are in the above folder, perform a rescan:

To do a Rescan you need to delete certain files on your computer depending on your Pro Tools version. Please follow the official Avid website to do this.

Authorization Exception Error Message:

If this error message pops up, follow these steps:

Close your DAW (Pro Tools, Logic, etc.)

Go to iLok.com and download the latest version of the iLok License Manager application.

Run the iLok License Manager installer on your computer.

Restart your computer.

This issue only affects users who have not installed iLok License Manager 4.0.3 or later.

The plugin makes no sound at all, why is this happening?

You have most likely not activated the software yet, or the license file has moved to a different location and the software can't find it anymore. Please check the license activation window and double check that it still says you are registered. If not, simply redo the steps mentioned in the License Activation chapter.

Where do I find the installers?

You can download your plug-ins from your STL Tones account. Your account will display the installers and serial numbers for all of the STL Tones products you have purchased.

Where is the STL Tonality Plugin located on my computer?

Mac:

AudioUnits: Macintosh HD / Library / Audio / Plug-ins / Components / STL Tonality - Howard Benson

VST: Macintosh HD / Library / Audio / Plug-ins / VST / STL Tonality - Howard Benson

AAX: Macintosh HD / Library / Application Support / Avid / Audio / Plug-ins / STL Tonality - Howard Benson

Windows:

32-bit VST: C:\ Program Files (x86) \ Steinberg \ VSTPlugins \ STL Tonality - Howard Benson

64-bit VST: C:\ Program Files \ VSTPlugins \ STL Tonality - Howard Benson

32-bit AAX: C:\ Program Files(x86) \ Common Files \ Avid \ Audio \ Plug-Ins \ STL Tonality - Howard Benson

64-bit AAX: C:\ Program Files \ Common Files \ Avid \ Audio \ Plug-Ins \ STL Tonality - Howard Benson

Note: The plug-in files are Universal, so 32-bit and 64-bit plug-ins are included in the same file and location.

CREDITS

STL Tonality - Howard Benson Plugin

Plugin Development - Federico Berti from Ignite Amps.

GUI Design - Sonny Truelove, Emma Truelove and Luke Boerdam.

Sincerely
STL Tones Team!